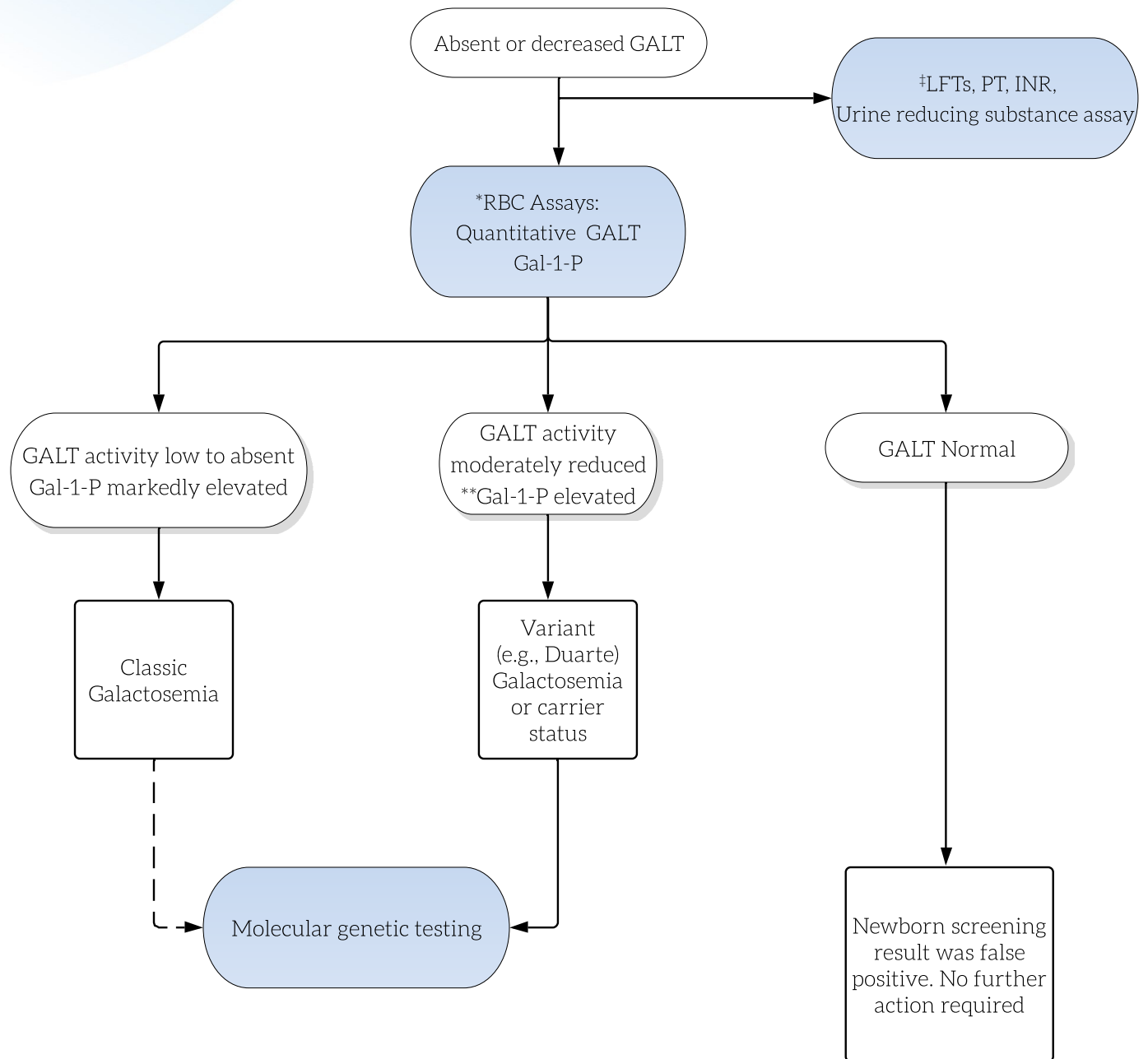


Galactosemia (GALT Deficiency)



Key

- Actions are shown in shaded ovals; results are in the unshaded ovals. Diagnostic outcomes in boxes
- *Transfusions may invalidate the results of the RBC enzyme assays (circa 90 days).
- ‡May be performed locally as a rapid screen to assess severity.
- **Gal-1-P will be reduced with lactose restriction

Abbreviations

Gal-1-P= Galactose -1-phosphate
 GALT = Galactose-1-phosphate uridyl transferase
 INR = International normalized ratio (for PT)
 LFT = Liver function tests
 PT = Prothrombin time
 RBC = Red blood cell