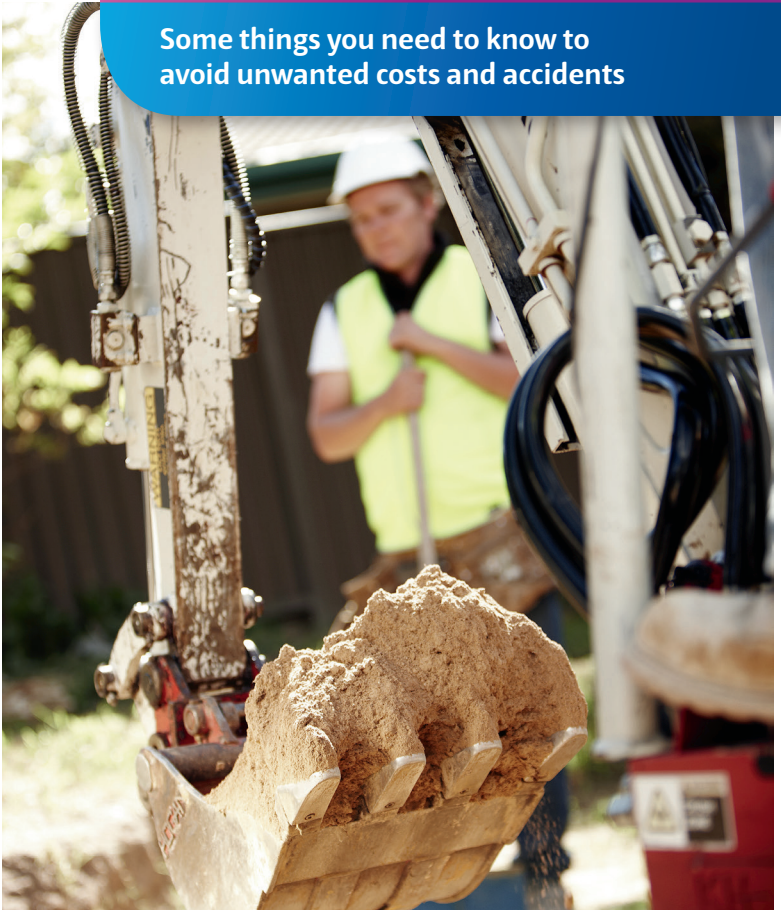


Building near utility assets

Some things you need to know to avoid unwanted costs and accidents



ActewAGL

ACTEW
WATER

When planning

When planning to build anything from a new house to an extension, pergola, swimming pool, garden or retaining wall, check what ActewAGL and ACTEW Water assets are on and around your block.

Utility assets include:

- meters
- manholes
- poles
- gas, sewerage and water pipes
- hydrants
- cables
- wires
- connections
- substations
- valves.

Contact Dial Before You Dig

It's easy and free to find out what's underground. Simply contact Dial Before You Dig and tell them your block location. They will pass the referral to the relevant services, who will send the information to you, generally within two working days.

There are two ways to lodge your enquiry:

- complete an online form at 1100.com.au
- call 1100.

Minimum clearances

The law prohibits a person from interfering with utility assets, for example by blocking access or building too close or on top of assets. ActewAGL and ACTEW Water requires that poles, manholes and meters have at least 1.5 metres of clearance. To check the required distances from powerlines, sewers, pipes and gas and water mains call us on 6248 3555.

Fines and removal

If you build a structure that is too close to, or interferes with, ActewAGL or ACTEW Water infrastructure, you may have to pay for it to be removed and you could be fined up to \$5,500.

It's your responsibility

It's the responsibility of all land-owners and occupiers to ensure there are no interferences to utility assets. If you engage a draftsman, builder, architect or landscaper, you may be held responsible if they fail to comply with minimum clearances or damage ActewAGL or ACTEW Water assets. Make sure they include these checks in your project.

Think outside your block

When building swimming pools or other structures, always consider services and substations outside your block. Minimum distances and other factors still apply.

Safety

If you hit an underground pipe or cable, it could be expensive and dangerous. Keep yourself and your family safe. Contact Dial Before You Dig and don't build too close to poles, pipes or wires. See the minimum clearances mentioned on page 2.

More information

To find out what's underground contact Dial Before You Dig. Complete an online form at 1100.com.au or call 1100.

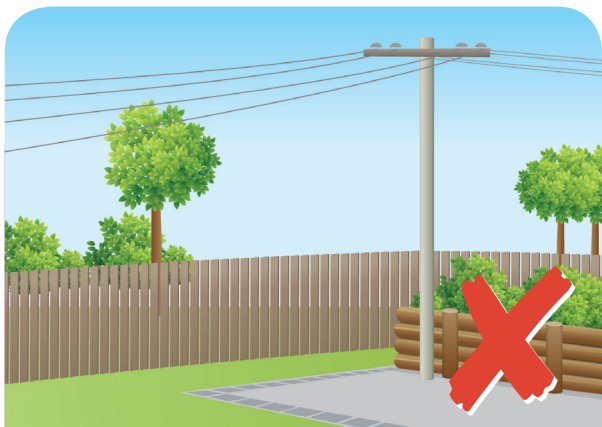
To check the required distances from powerlines, sewers, pipes and water mains go to call us on 6248 3555.



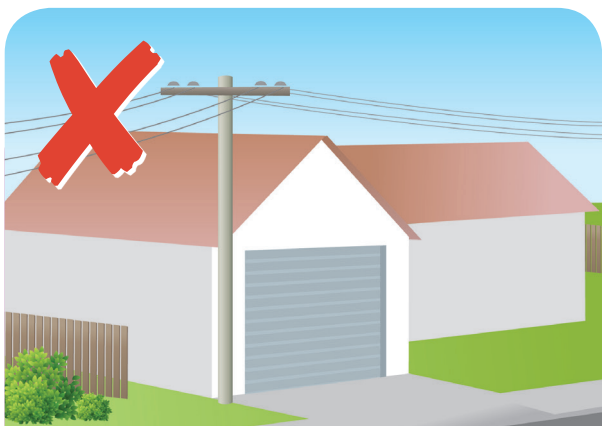
Never build over or close to pipes and cables.



Never attach structures to poles.



Avoid paving or cementing around the base of a pole, or building retaining walls next to poles.



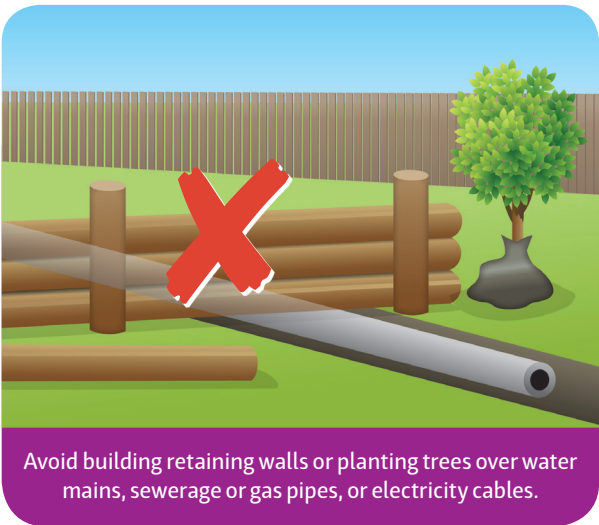
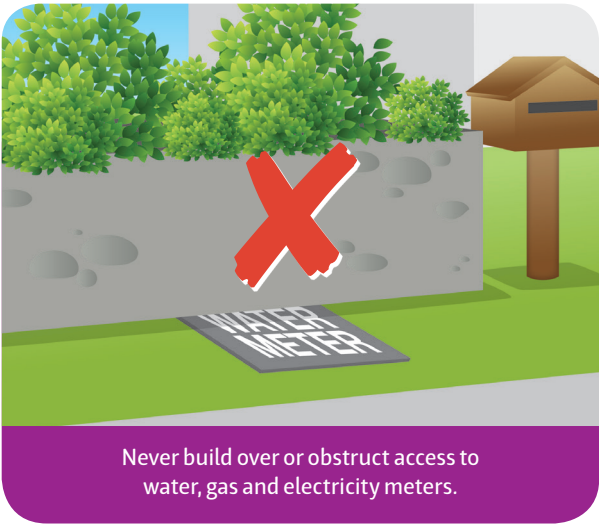
Never build too close to powerlines.



Never obstruct access to poles with rainwater tanks. When installing tanks under powerlines, ensure that the minimum clearances are met.

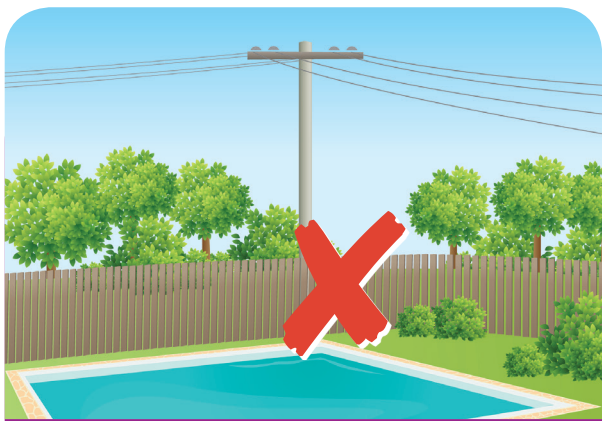


Never obstruct manholes.

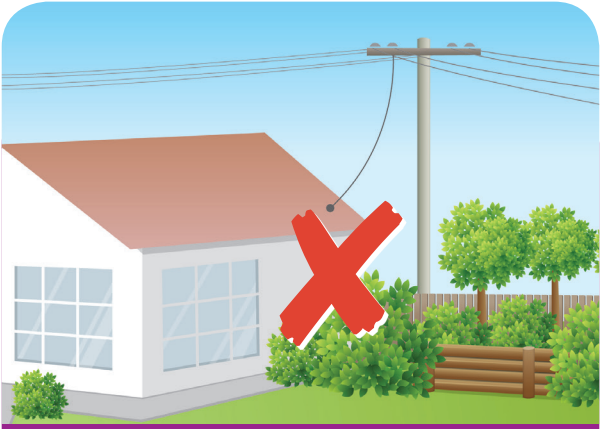




Never let vegetation, rock gardens or other landscaping obstruct access to substations or other electrical equipment.



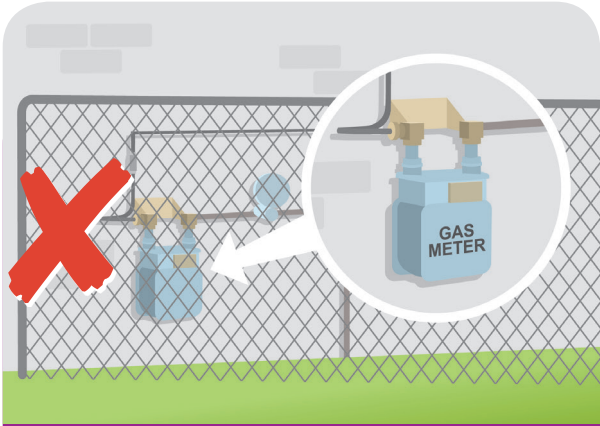
Never build swimming pools close to electrical services or water or sewer mains, even if they are in a laneway or outside the fence.



Never block access to utility infrastructure on your property. ActewAGL and ACTEW Water must have enough space to bring in equipment, repair network mains and access service connections.



Never dig holes without finding out where sewer, water or gas pipes or electricity cables are located.



Never lock gates or obstruct access to gas, electricity or water meters. Gates, fences or walls should be located to the rear of meter.



Never obstruct fire hydrants. In the event of a fire, emergency personnel may require access. Hydrants may also be used by ACTEW Water or authorised parties to draw water from the network.



More information

For more information about building near utility assets visit actewagl.com.au/safety

Customer enquiries

13 14 93 – electricity, water, sewerage

13 18 86 – natural gas

Emergencies and faults – 24 hours

13 10 93 – electricity and electric shock reports

13 19 09 – natural gas

13 11 93 – water, sewerage and stormwater

Language assistance

13 14 50 – 24 hours

如果您需要幫助，請打電話給下面的號碼。

¿Necesita un intérprete? Llame al número indicado abajo.

هل تحتاج إلى مترجم؟ اتصل بالرقم أدناه.

Trebate li pomoć tumača? Nazovite niže navedeni broj.

Nêu qui vị cần sự giúp đỡ, vui lòng gọi số bên dưới.

Se vi serve un interprete, telefonate al seguente numero.

Αν χρειάζεστε διερμηνέα, τηλεφωνείτε στον αριθμό παρακάτω.

