

UNEARTHED

by Frank Bender



UNEARTHED BY FRANK BENDER

At the W. Montague Cobb Laboratory at Howard University, I held the eldest woman's skull in my hands and felt that she had endured the most. The younger woman with the bandanna had been shot in the back. The young man in the background, the youngest and tallest of the three, is rising for the hope-filled future.

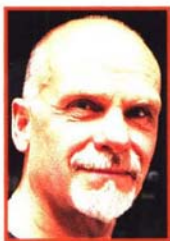
Unearthed, an integrated spirit, they chose me. I was naturally drawn to these three personalities.

I pulled on my 24 years of forensic involvement in identifying human remains and my passion for art and felt that through three hands joined together in the earth that I would be able to convey my idea that we are all one in death.



These three were selected from the hundreds of human remains discovered in an African Burial Ground in New York City in 1991.

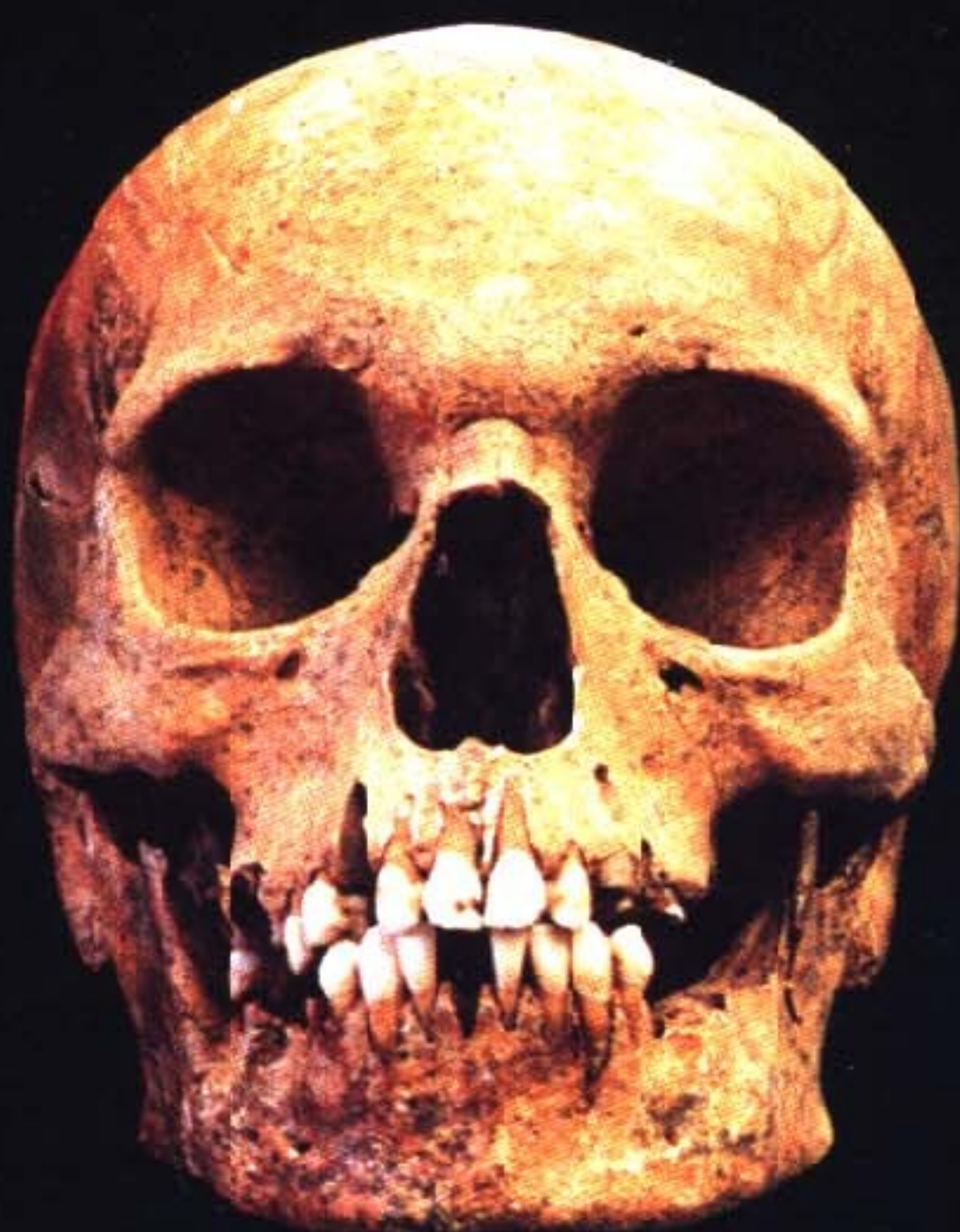
I was deeply moved by the unique opportunity this project afforded me to combine the use of my forensic skills and fine art skills to unearth the history told by these human remains.



Frank Bender is a world renowned sculptor, known for his work on forensic facial identifications, fugitive age progressions and fine art. His studio is located in Philadelphia, Pennsylvania.

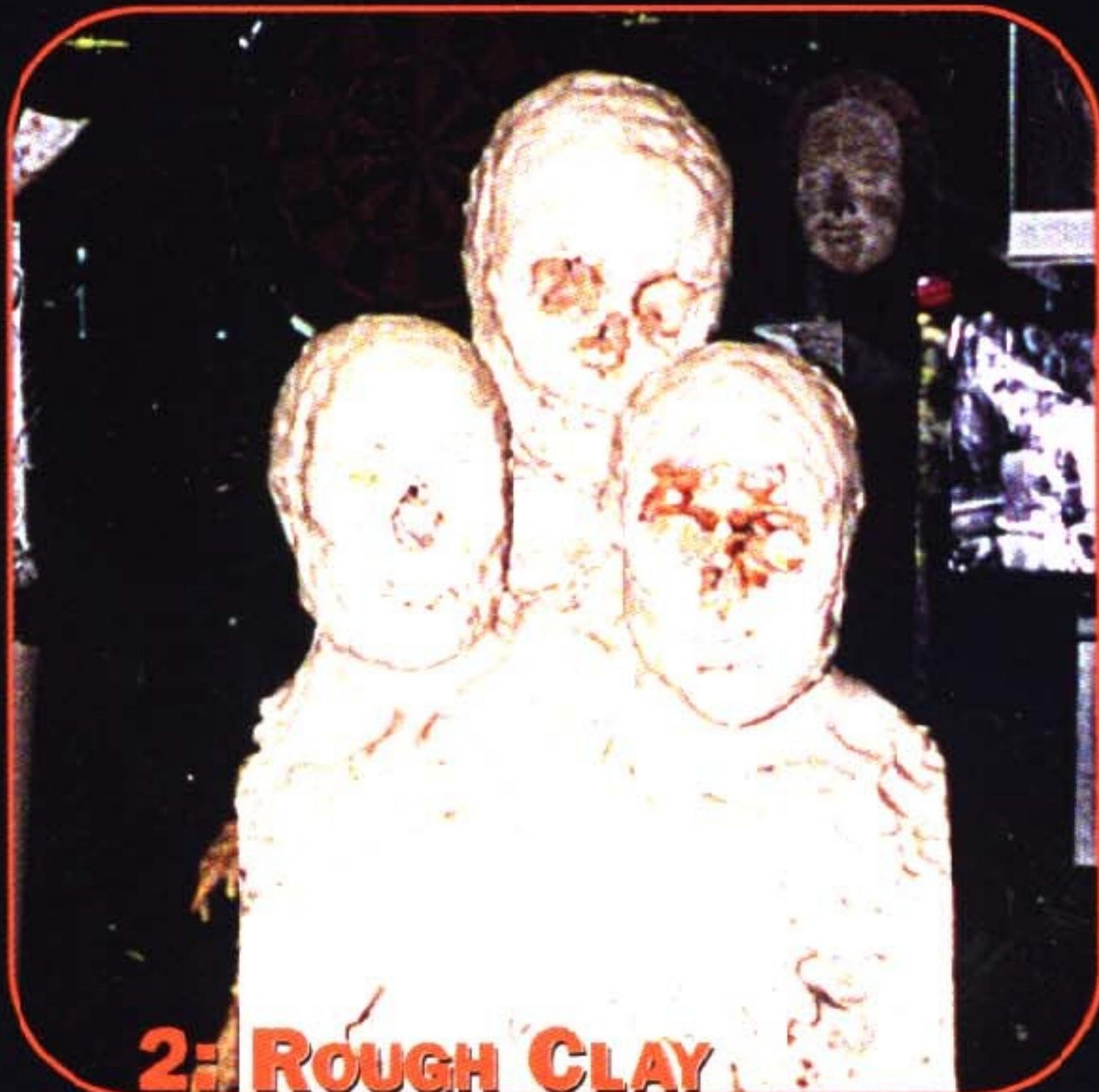
Special thanks to: the General Services Administration and The British Broadcasting Company for the funding and support provided for this project, and to Howard University for their technical assistance.

Photos by Frank Bender
Design by BenderArt · 646.515.0187



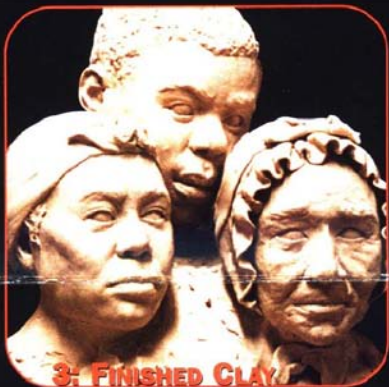
1: Skull

Foundation for facial reconstruction



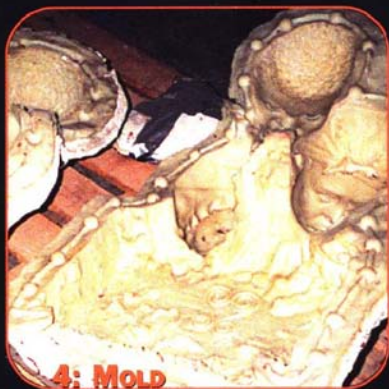
2: ROUGH CLAY

A combination of art and science develops



3: FINISHED CLAY

Ready for applying mold material



4: MOLD



5: WAX

**Cooled wax pulled from mold
and final details applied**



6: SANDBLASTED BRONZE



7: METAL TOUCH-UP

Sandblasting bronze prior to patina



8: FINISHED BRONZE

Finished bronze with patina