

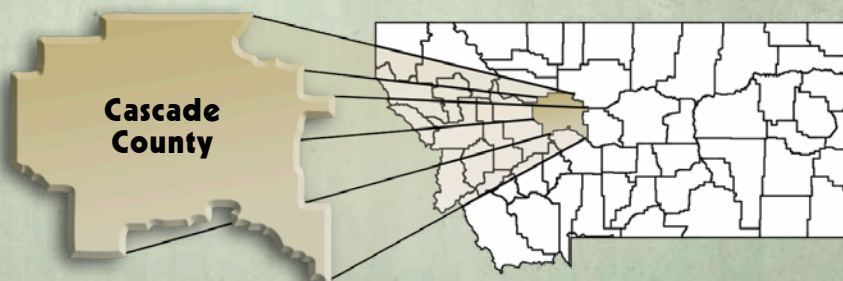
## Demographic & Economic Information for

# Cascade County



**September 2010**

*Photo courtesy of Donnie Sexton, Travel Montana*



**Montana Department  
of Labor and Industry**  
**WORKFORCE SERVICES DIVISION**



Research and Analysis Bureau - P.O. Box 1728 - Helena, MT 59624-1728  
Ph: (406) 444-2430 or (800) 541-3904, Fax: (406) 444-2638, E-mail:  
[webmasterrad@mt.gov](mailto:webmasterrad@mt.gov), [www.ourfactsyourfuture.org](http://www.ourfactsyourfuture.org)



Census and Economic Information Center  
Montana Department of Commerce  
P.O. Box 200505 - Helena, MT 59620-0505  
Ph: (406) 841-2740 - Fax: (406) 841-2731  
E-mail: [ceic@mt.gov](mailto:ceic@mt.gov) - Website: [www.ceic.mt.gov](http://www.ceic.mt.gov)



# Cascade County

Cascade County is Montana's fifth most populous county, with an estimated 82,178 residents as of July 1, 2009. Great Falls, the county seat, is the state's third largest city, with a population estimated at 59,366 in 2009.<sup>1</sup> Great Falls accounts for 72.2% of Cascade County's total population. Other cities and towns in Cascade County include: Belt, Cascade, Millegan, Monarch, Neihart, Sun River, and Ulm.

Great Falls is bordered on the west by the Rocky Mountains, to the southeast by the Little Belt and Highwood Mountains, and by the Hi-line area to the north. The city is home to Malmstrom Air Force Base, which is a driving force in the regional economy, employing the majority of the 3,686 military employees reported for Cascade County in 2008.<sup>2</sup> Great Falls also boasts the C. M. Russell Museum, the Lewis & Clark Interpretive Center, and two colleges: the University of Great Falls, and the MSU-Great Falls College of Technology.

<sup>1</sup>U.S. Census Bureau, *Population Estimates Program*

<sup>2</sup>Bureau of Economic Analysis, <http://bea.gov/regional/reis>

## Resources for Cascade County

### Chamber of Commerce

Great Falls Chamber  
P. O. Box 2127  
Great Falls, MT 59403  
(406) 761-4434  
<http://greatfallsonline.net>

### Newspapers

Cascade Courier  
103 1st Street South  
Cascade, MT 59421  
(406) 468-9231  
[www.cascademontana.com/courier.htm](http://www.cascademontana.com/courier.htm)

Great Falls Tribune  
205 River Drive South  
Great Falls, MT 59405  
(406) 791-1444  
[www.greatfallstribune.com](http://www.greatfallstribune.com)

### Economic Development

Business Expansion And Retention (BEAR)  
Contact: Linda McNeill, (406) 454-3217  
E-mail: [lmcneill@msugf.edu](mailto:lmcneill@msugf.edu)

### Great Falls Development Authority

300 Central Avenue, Suite 406  
Great Falls, MT 59401  
Ph: (406) 771-9020  
Fax: (406) 454-2995  
[www.gfdevelopment.org](http://www.gfdevelopment.org)

### Job Service Workforce Centers

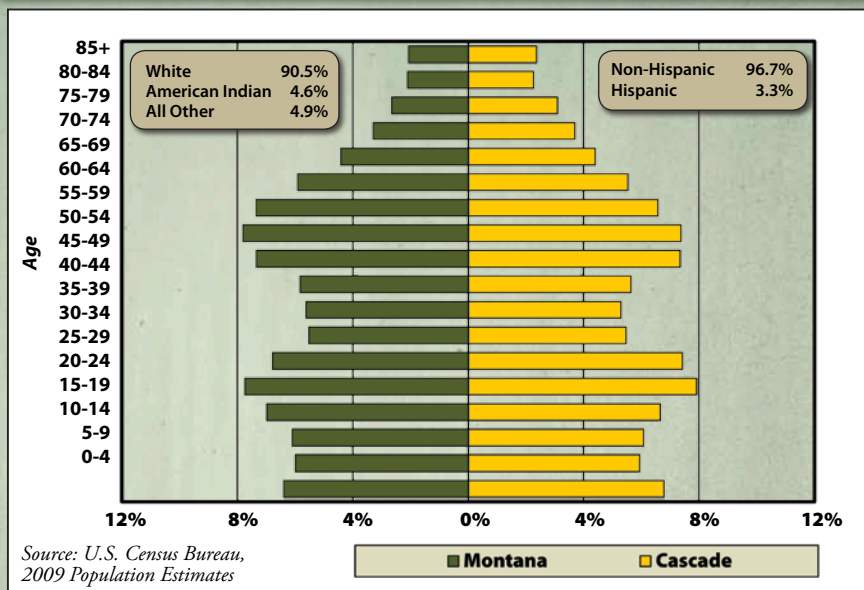
Great Falls Job Service  
Workforce Center  
1018 7th Street S.  
Great Falls, MT 59405  
Phone: 406-791-5800  
[wsd.dli.mt.gov/local/greatfalls](http://wsd.dli.mt.gov/local/greatfalls)

## Population for Cascade County & Related Areas

Geography	% Change 2000-2009	Population Estimates						Census
		July 1, 2009	July 1, 2008	July 1, 2007	July 1, 2006	July 1, 2005	July 1, 2000	April 1, 2000
Cascade County	2.5%	82,178	82,022	81,780	81,813	81,766	80,201	80,357
Belt town	-6.2%	589	593	600	616	627	628	633
Cascade town	-5.2%	770	775	784	805	819	812	819
Great Falls city	4.0%	59,366	59,258	58,788	58,536	58,280	57,095	56,690
Neihart town	-5.6%	85	86	87	89	91	90	91
Balance Cascade County	-1.0%	21,368	21,310	21,521	21,767	21,949	21,576	22,124

Source: U.S. Census Bureau, Population Estimates Program

## Distribution of Population by Age Montana and Cascade County, 2009



Source: U.S. Census Bureau,  
2009 Population Estimates

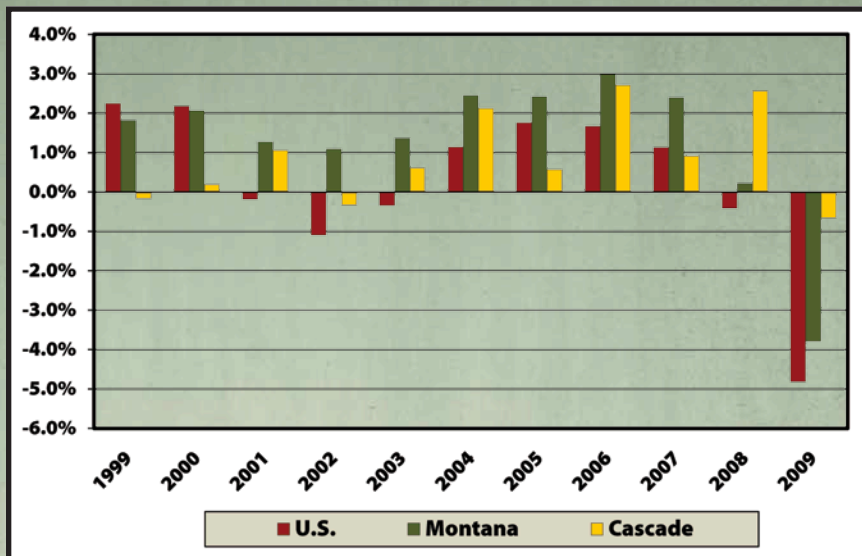
## Highest Level of Educational Attainment (Population 25 years and older)

Educational Attainment	Cascade County	Montana	U.S.
Less than High School Diploma	12.9%	12.8%	19.6%
High School Diploma (or equivalent)	33.3%	31.3%	28.6%
Some College	25.5%	25.6%	21.0%
Associate Degree	6.8%	5.9%	6.3%
Bachelor's Degree	14.8%	17.2%	15.5%
Master's Degree	4.7%	4.6%	5.9%
Professional Degree	1.6%	1.7%	2.0%
Doctoral Degree	0.3%	0.9%	1.0%

Source: U.S. Census Bureau, Census 2000



## Percent Change in Employment: 1999 to 2009 U.S., Montana, and Cascade County



Source: Montana Department of Labor & Industry, Quarterly Census of Employment and Wages Program (QCEW)

## Top 20 Private Employers in Cascade County (Based on 4th Quarter 2009 Data - Listed in Alphabetical Order)

Business Name	Size Class	Business Name	Size Class
Albertson's	6	Meadow Gold Dairy	6
Benefis Healthcare	6	Missouri River Manor	6
Benefis Hospital	9	National Electronics Warranty	8
Centene Corporation	6	North Central Independent Living	6
Center for Mental Health	6	Park Place Health Care Center	6
D A Davidson & Co.	6	Quality Life Concepts	6
Easter Seals - Goodwill	7	Sam's Club	6
Great Falls Clinic	8	Sletten Construction	6
Great Falls Tribune	6	University of Great Falls	6
Heritage Inn	6	Wal-Mart	8

Employment Size Class Coding: Class 9 = 1000+ employees, Class 8 = 500 to 999 employees, Class 7 = 250 to 499 employees, Class 6 = 100 to 249 employees, Class 5 = 50 to 99 employees, Class 4 = 20 to 49 employees, Class 3 = 10 to 19 employees

Source: Montana Department of Labor & Industry, Quarterly Census of Employment and Wages Program (QCEW) This list includes ONLY private industry employers subject to unemployment insurance. Railroads, tribal entities, and government agencies are excluded.

## Agricultural Statistics - Cascade County

<b>Farms</b>			
	<b>2007 Census</b>	<b>2002 Census</b>	<b>% Change</b>
<b>Farms: (number)</b>	1,112	1,037	7%
Land in farms (acres)	1,379,645	1,388,530	-1%
Average size of farms (acres)	1,241	1,339	-7%
Median size of farms (acres)	160	302	-47%
<b>Farms by size: (number)</b>			
Less than 1,000 acres	837	737	14%
1,000 acres or more	275	300	-8%
<b>Farms by value of products sold: (number)</b>			
Less than \$100,000	942	901	5%
\$100,000 or more	170	136	25%
<b>Farms by type of organization: (number)</b>			
Family, Individual, Partnership	1,009	952	6%
Corporation, Cooperative, Trust	103	85	21%
<b>Livestock Inventory and Crops Harvested</b>			
<b>Livestock and Poultry Inventory (number)</b>			
Cattle and calves	64,704	67,182	-4%
Hogs and pigs	17,356	14,403	21%
Sheep and lambs	6,513	9,921	-34%
Horses and ponies	3,243	3,109	4%
Bison	*	459	*
Chickens (layers and broilers)	60,328	52,498	15%
<b>Crops Harvested (acres)</b>			
Corn for grain	0	*	*
Corn for silage or greenchop	154	*	*
Wheat for grain, All	139,782	131,020	7%
Winter wheat for grain	113,473	80,310	41%
Spring wheat for grain	*	49,659	*
Durum wheat for grain	*	1,051	*
Oats for grain	292	918	-68%
Barley for grain	27,869	45,306	-38%
Hay, haylage, grass silage	83,511	89,034	-6%
Sunflower seed, All	0	0	NA
<b>Operator Demographics</b>			
<b>Primary occupation: (number)</b>			
Farming	496	589	-16%
Other	616	448	38%
<b>Place of residence: (number)</b>			
On farm operated	884	820	8%
Not on farm operated	228	217	5%
<b>Years on present farm: (number)</b>			
Less than 10 years	308	291	6%
10 years or more	804	746	8%
<b>Age group: (number)</b>			
Under 55 years	449	499	-10%
55 years and over	663	538	23%
<b>Average age of operators: (number)</b>	58.2	55.8	4%

Source: U.S. Department of Agriculture, National Agricultural Statistics Service, 2007

\* - Not Disclosable

## Employment by Industry - Annual Averages 2009

Industry	Number of Establishments	Average Annual Employment	Annual Wages Per Job
TOTAL ALL INDUSTRIES	2,739	35,506	\$32,748
TOTAL PRIVATE	2,630	29,745	\$31,068
AGRICULTURE, FORESTRY, FISHING & HUNTING	31	158	\$24,441
Crop production	11	76	\$19,350
Animal production	12	74	\$28,489
Fishing, hunting and trapping	1	*	*
Agriculture & forestry support	7	*	*
MINING	3	4	\$35,970
Oil and gas extraction	1	*	*
Mining, except oil and gas	1	*	*
Support activities for mining	1	*	*
UTILITIES	19	183	\$67,973
CONSTRUCTION	330	2,259	\$40,893
Construction of buildings	103	531	\$36,131
Heavy and civil engineering construction	23	520	\$58,394
Specialty trade contractors	205	1,208	\$35,457
MANUFACTURING	57	966	\$43,214
Food manufacturing	13	438	\$42,613
Beverage and tobacco product mfg	4	82	\$35,018
Textile product mills	1	*	*
Leather and allied product manufacturing	2	*	*
Wood product manufacturing	3	33	\$28,516
Paper manufacturing	1	*	*
Printing and related support activities	6	104	\$36,335
Petroleum & coal products manufacturing	1	*	*
Plastics & rubber products manufacturing	1	*	*
Nonmetallic mineral product mfg	3	35	\$41,434
Primary metal manufacturing	1	*	*
Fabricated metal product manufacturing	3	5	\$20,544
Machinery manufacturing	1	*	*
Computer and electronic product mfg	1	*	*
Furniture and related product mfg	6	51	\$30,073
Miscellaneous manufacturing	10	35	\$39,497
WHOLESALE TRADE	161	1,255	\$46,663
Merchant wholesalers, durable goods	90	760	\$46,744
Merchant wholesalers, nondurable goods	43	403	\$46,372
Electronic markets & agents and brokers	28	92	\$47,275
RETAIL TRADE	356	5,182	\$23,298
Motor vehicle and parts dealers	52	698	\$33,169
Furniture and home furnishings stores	24	141	\$26,974
Electronics and appliance stores	22	107	\$32,630
Building material & garden supply stores	29	483	\$30,693
Food and beverage stores	27	550	\$20,779
Health and personal care stores	28	271	\$29,137
Gasoline stations	34	566	\$21,478
Clothing and clothing accessories stores	39	306	\$15,602
Sporting good, hobby, book, music stores	27	360	\$14,498
General merchandise stores	14	1,328	\$19,445
Miscellaneous store retailers	52	326	\$19,440
Nonstore retailers	9	46	\$39,647
TRANSPORTATION AND WAREHOUSING	86	937	\$34,765

Source: Montana Department of Labor & Industry, Quarterly Census of Employment and Wages Program (QCEW)

\* Data Not Disclosable

## Employment by Industry - Annual Averages 2009

Industry	Number of Establishments	Average Annual Employment	Annual Wages Per Job
Air transportation	4	28	\$22,519
Truck transportation	45	266	\$30,863
Transit and ground passenger transport	6	181	\$17,315
Pipeline transportation	3	9	\$68,125
Support activities for transportation	15	167	\$44,563
Postal service	1	*	*
Couriers and messengers	10	252	\$46,167
Warehousing and storage	3	32	\$26,333
INFORMATION	41	721	\$34,921
Publishing industries, except Internet	7	*	*
Motion picture, sound recording industry	2	*	*
Broadcasting, except Internet	8	191	\$31,394
Telecommunications	14	275	\$43,171
ISPs, search portals, & data processing	7	24	\$44,392
Other information services	2	*	*
FINANCE AND INSURANCE	167	1,661	\$50,581
Credit intermediation & related activity	49	705	\$39,209
Securities, comm. contracts, investments	26	329	\$81,541
Insurance carriers & related activities	89	612	\$47,605
Funds, trusts, other financial vehicles	3	15	\$26,588
REAL ESTATE AND RENTAL AND LEASING	115	397	\$23,919
Real estate	92	246	\$23,927
Rental and leasing services	21	*	*
Lessors of nonfinancial intangible asset	2	*	*
PROFESSIONAL AND TECHNICAL SERVICES	241	1,238	\$48,484
MANAGEMENT OF COMPANIES AND ENTERPRISES	13	201	\$49,591
ADMINISTRATIVE AND WASTE SERVICES	151	1,900	\$23,694
Administrative and support services	147	1,885	\$23,645
Waste management and remediation service	4	15	\$30,082
EDUCATIONAL SERVICES	22	365	\$26,859
HEALTH CARE AND SOCIAL ASSISTANCE	270	6,191	\$36,327
Ambulatory health care services	159	1,926	\$48,763
Hospitals	2	*	*
Nursing and residential care facilities	29	*	*
Social assistance	79	1,143	\$16,636
ARTS, ENTERTAINMENT, AND RECREATION	86	936	\$14,389
Performing arts and spectator sports	11	130	\$16,068
Museums, historical sites, zoos, & parks	5	55	\$21,994
Amusements, gambling, and recreation	70	751	\$13,543
ACCOMMODATION AND FOOD SERVICES	229	3,863	\$12,546
Accommodation	24	588	\$15,421
Food services and drinking places	205	3,275	\$12,030
OTHER SERVICES	250	1,328	\$23,589
Repair and maintenance	90	470	\$31,688
Personal and laundry services	40	300	\$19,550
Membership associations & organizations	91	515	\$19,009
Private households	30	43	\$17,975
TOTAL GOVERNMENT	109	5,761	\$41,420
Local Government	45	3,055	\$35,248
State Government	16	1,005	\$38,916
Federal Government	48	1,702	\$53,980

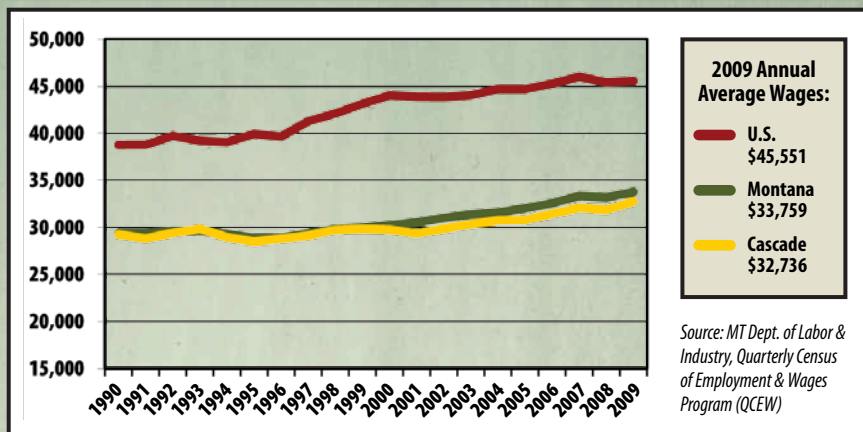
The QCEW program compiles data reported by all employers covered under Montana unemployment insurance. (Totals may not add due to nondisclosure of confidential industry data or to rounding.)

## Annual Average Labor Force - Cascade County

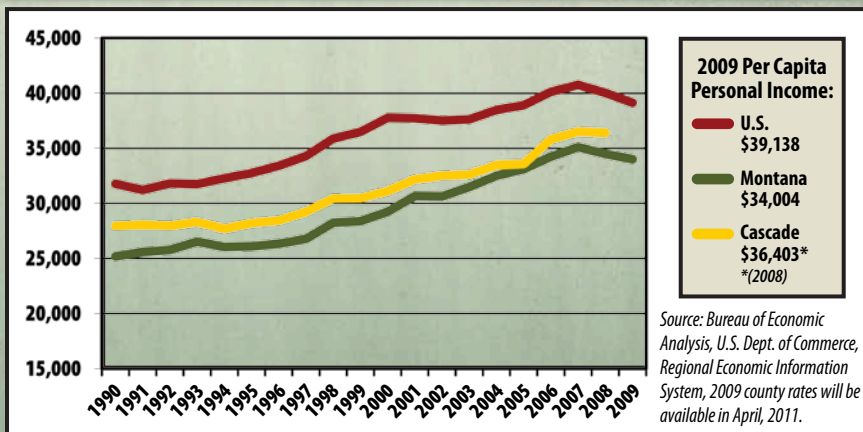
Year	Civilian Labor Force	Employed	Unemployed	Unemployment Rate
2009	40,485	38,510	1,975	4.9%
2008	40,506	38,806	1,700	4.2%
2007	39,513	38,315	1,198	3.0%
2006	39,540	38,291	1,249	3.2%
2005	38,840	37,406	1,434	3.7%

Source: Montana Department of Labor & Industry, Local Area Unemployment Statistics Program (LAUS)

## Annual Average Wages, 1990 to 2009 (In 2009 Dollars)



## Per Capita Personal Income, 1990 to 2009 (In 2009 Dollars)



This public document was produced for web distribution. Printed copies are available upon request, and are produced at an estimated cost of \$0.50 per copy, which includes \$0.50 for printing and \$0.00 for distribution.